



RECP #: 752706

RECORDED 5/8/2019 AT 1:13 PM BK# 2620 PG# 1748  
Debra K. Lee, CLERK OF LARAMIE COUNTY, WY PAGE 1 OF 1

# STATE OF WYOMING CORNER RECORD

(In compliance with the CORNER PERPETUATION AND FILING ACT, Wyoming Statutes, 1997 Section 33-29-140, et. seq., and the Rules and Regulations of the Board of Registrations for Professional Engineers and Professional Land Surveyors)

## SOUTHEAST CORNER SECTION 18, T. 18 N., R. 61 W., 6TH P.M., LARAMIE COUNTY, WYOMING

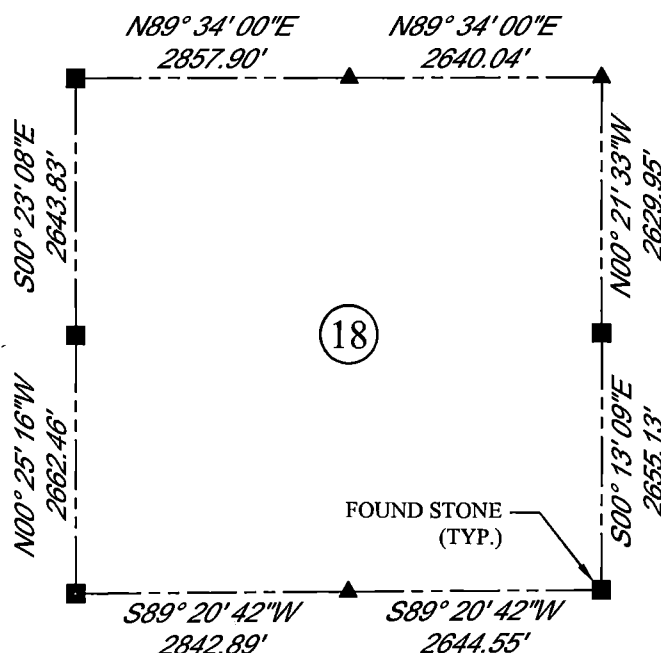
**GLO:** A SANDSTONE 15X12X10 SET 10" DEEP MARKED WITH 3 NOTCHES ON SOUTH EDGE AND 5 NOTCHES ON EAST SIDE FOR COR. TO SECS 17,18,19,20.

**FOUND:** LOOSELY SET STONE, APPROXIMATELY 14X8X8. STONE IS DIRECTLY UNDER NORTH AND SOUTH FENCE LINE.

**SET:** NOTHING.



SCALE: NONE  
NORTH DETERMINED BY  
G.P.S OBSERVATIONS



STONE FOUND

### LEGEND:

- FOUND BLM CAP
- FOUND USFS CAP
- FOUND STONE
- FOUND PRIVATE MONUMENT
- ◇ CALCULATED POSITION
- ▲ SET MONUMENT (LS10245)
- SECTION LINE

DATE OF FIELD WORK: 09/11/2018 OFFICE REFERENCE: MERIDEN

### CROSS INDEX DIAGRAM

1	2	3	4	5	6	7	8	9	10	11	12	13	14	15	16	17	18	19	20	21	22	23	24	25	
A																									A
B																									B
C	6					5					4					3					2			1	C
D																									D
E																									E
F																									F
G	7					8					9					10					11			12	G
H																									H
J																									J
K																									K
L	18					17					16					15					14			13	L
M																									M
N																									N
O																									O
P	19					20					21					22					23			24	P
Q																									Q
R																									R
S																									S
T	30					29					28					27					26			25	T
U																									U
V																									V
W																									W
X	31					32					33					34					35			36	X
Y																									Y
Z																									Z
	1	2	3	4	5	6	7	8	9	10	11	12	13	14	15	16	17	18	19	20	21	22	23	24	25

WOOD  
2615 AVIATION DRIVE  
SHERIDAN, WY 82801  
PH: 307-675-6400

THIS CORNER RECORD WAS  
PREPARED BY ME OR UNDER  
MY DIRECTION AND  
SUPERVISION,  
SEAL AND SIGNATURE

# wood.

